

What is your favorite aspect of Spikeball?



"Spikeball is a very accessible game that I can just play during lunch time in the center of the school."

HIRAM GARCIA ('23)



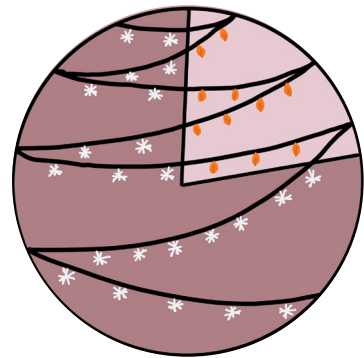
"My favorite aspect of Spikeball is the excitement you get when you had a really long rally."

JOSHUA KAO ('23)

THIS SEASON?

"I didn't put my holiday decorations up before Thanksgiving, because Christmas does not come before Thanksgiving. People who put up Christmas trees on November 1 do not have a firm grasp of time. I routinely put up Christmas decorations on the 25th of December, because that is Christmas."

SIDD SEN ('24)



79% after

Students share if they put up holiday decorations before or after Thanksgiving. Data from 70 students. Illustration by Tali Lehrer

"My family has always waited until after Thanksgiving to start celebrating Christmas, we always just thought that it was weird to 'skip Thanksgiving' and go straight to Christmas."

GRACE CORRIGAN ('23)



SPIKEBALL champs

Players reflect on their matches at the annual freshman Spikeball tournament.

Photos by Tali Lehrer

(left) **HIGH IN THE** air, Nathan Lee ('26) jumps to keep the ball in play during the opening game of the tournament. "I'm happy about my performance at the tournament," Lee said. (right) **JUMP INTO ACTION**, Brendan King ('26) swoops the ball into the net at the game against the "Nathans" (Nathan Lee and Nathan Chang). King and Max Merkel's ('26) team, the "Germans" ultimately took the championship title at the freshman Spikeball tournament. "Our favorite part was winning," King said as he reflected on the game.

unleash YOUR SPIRIT

Cheer shows off their moves at senior night with football.



(right) **WHILE HOLDING UP** funny posters, seniors Grace Corrigan, Hillary Studdert, and McKenna Rausch hold watch the game. "A lot of my friends are seniors on the football team and I thought it would be fun to make poster for them to celebrate their accomplishments and hard work," Rausch said. Photos by Clare Antonov

back to the 20'S

Paly Theatre transports audience to the 1920's with their production of Radium Girls.

For the first time in two years, the theater program performed a different style of play: historical fiction. Radium Girls, a story that highlights sexism and power dynamics, follows the women who worked in watchmaking factories in the 1920's and the events that transpired after it was discovered that the radium they were using to paint watch faces was dangerous.

Despite being a much darker production than the light hearted shows put on in the past, those involved felt that this new experience portraying events that happened in real life was fun, rewarding, and valuable.

Mina Fry, who played the female lead in the show, finally achieved her dream of starring in a production that she was extremely proud of.

"This show is like a culmination of all the hard work that I've put into the theater program over the years, and I'm really glad that I got this opportunity," Fry said. "I think it surpassed everyone's expectations and the show was an opportunity for the students working on it to be pushed out of their comfort zone and grow."

Matthew Arradaza, also a part of the Radium Girls cast, felt that the play was also a valuable learning experience. The cast worked diligently to make sure they were portraying the characters and history accurately.

"We had to get the historical significance and the tone perfect so that we weren't not sending the wrong message about this time period," Arradaza said. "It was such an educational moment for both the audience and us as actors

and I think we got a lot out of it."

Jack Champlin, who portrayed the male lead in the production, was passionate about how deeply the play affected him as an actor and the

"It was such an educational moment for both the audience and us as actors and I think we got a lot out of it."

MATTHEW ARRADAZA ('24)

audience.

"Everyone really put their all into this show and it came out so well to the point that after performances, I had people coming up to me and telling me that it made them cry genuinely," Champlin said. "I feel so honored to have been a part of such a fun and meaningful production at Paly. It was a really special play."

Story by Chloe Amos. Design by Marco Li

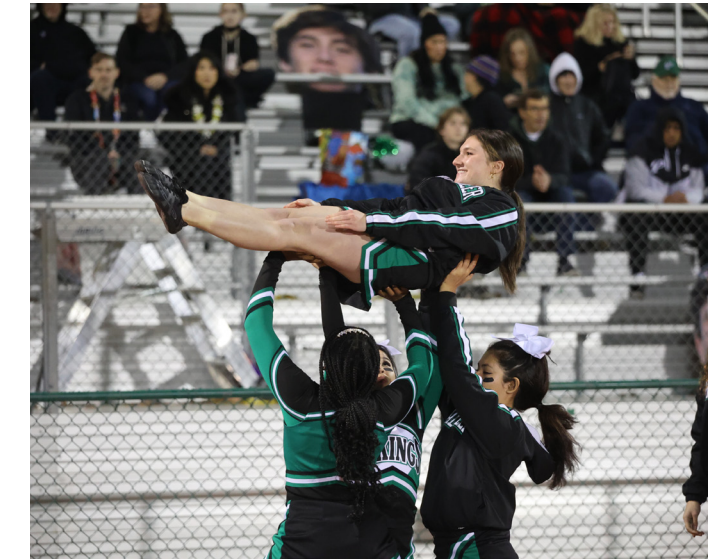


(left) **PRIOR TO THE** play, Erin Brady ('23) and Mina Fry ('23) relax in the makeup room before they step on the stage.

(top) **SITTING ON THE** old-fashioned arm chair, Jack Champlin ('24) and Sofia Vincent ('23) act as husband and wife.

"My favorite part was just getting to play this character and to have such a fun dynamic with so many other really talented actors," Champlin said.

(bottom) **IN THE FIRST** play of the year, Mina Fry ('23) and Matthew Arradaza ('24) are fully committed and dedicating to their roles. "Every single person that I've talked to after this production came out of it just proud," Arradaza said.



(middle) **AS THE CHEER** goes on, Natalie Karel ('23) is held high by teammates during a performance. "I was super happy to be performing on senior night. I felt super appreciate and I had a great night!" Karel said. (bottom) **CHEERING FOR THE** football team, Lily Jeffrey ('25), Bee Montes ('24), and Natalie Karel ('23) are surrounded and lifted up by all other members of the team.